

**1 THRU 250HP
NEMA 140T THRU 449T
HIGH EFFICIENCY
ISO9001 CERTIFIED**

Powerful + Efficient + Reliable



TEFC

CAST IRON FRAMES

CLASS F INSULATED

1.15 SERVICE FACTOR

OVER SIZED BEARINGS

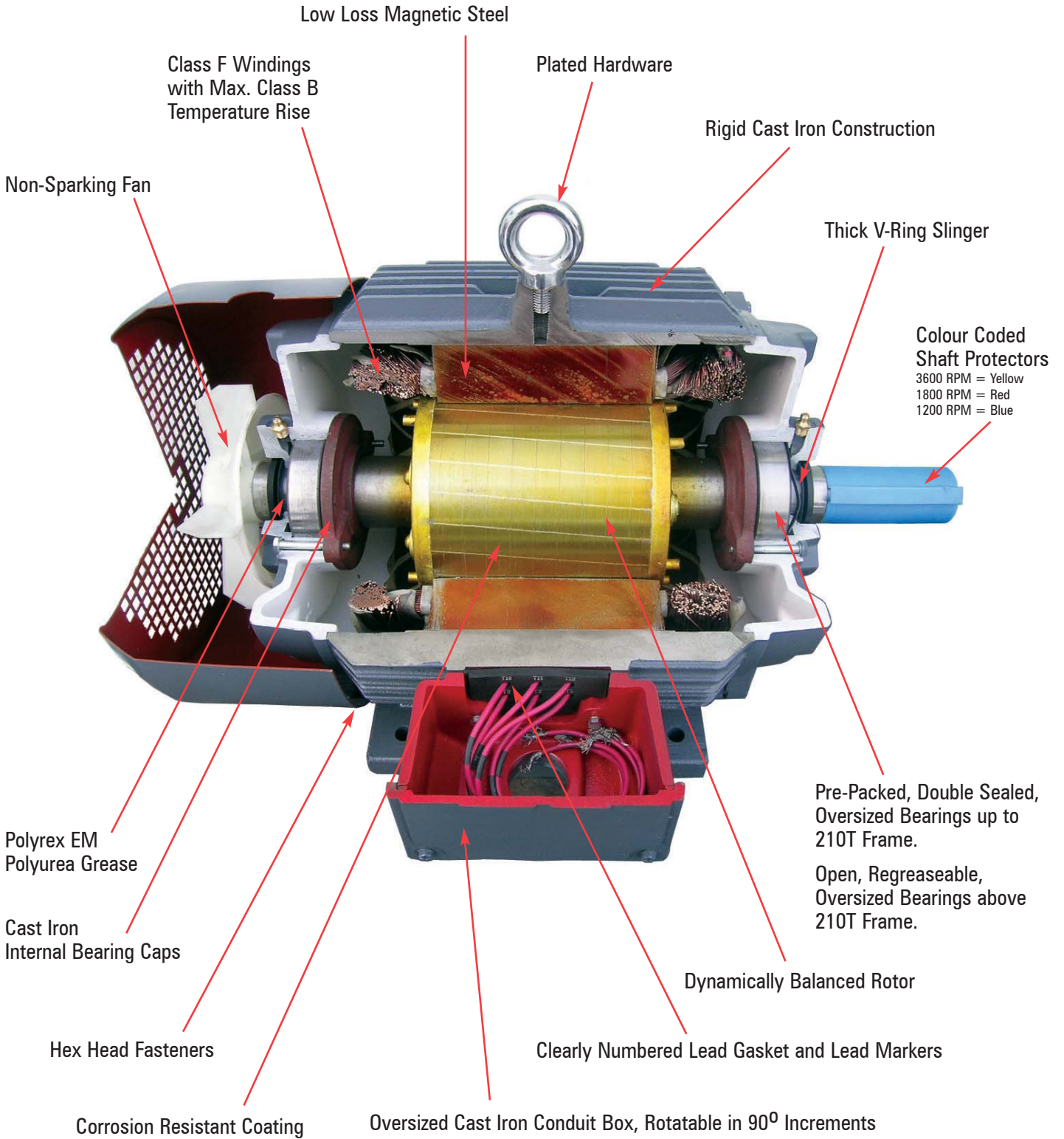
LOW-LOSS ELECTRICAL GRADE LAMINATION STEEL

V-RING SLINGER KEEPS OUT MOISTURE AND CONTAMINATION

FULL GASKETS AND GROUND LUG IN CONDUIT BOX

THINK QUALITY

Cross-Section View



Note: Construction Varies With Frame Size.



Construction Features Optimized Design For Long Life and High Performance

- AC, 3-phase, squirrel cage induction motor.
- Totally enclosed fan cooled, IP54 protection.
- 60 hertz, 208-230/460 Volts and 575 Volts, at 1.15 SF.
- 50 hertz, 380/415 Volts at 1.0 SF.
- Supply voltage +/- 10%, supply frequency +/- 5%.
- Useable at altitudes to 1000 metres without de-rate.
- Rigid cast iron frame, end brackets, and conduit box.
- NEMA MG.1, EEMAC M1-6, CSA C390.
- Continuous duty, 1.15 service factor.
- Colour coded shaft covers and rust inhibitor coating protects the shaft.
- Stainless Steel, 4 Rivet Nameplate.
- Wye-Delta start capability from Frame 210T and higher.
- High efficiency with high power factor.
- Bi-directional rotation.
- F1 mounting, field modifiable to F2 orientation.
- Standard ground lug in terminal box plus additional ground lug on motor foot for frames 324T and higher.
- Polyrex EM polyurea grease for -40^o C to +40^o C ambient temperatures.
- Oversized vacuum degassed bearings.
- Up to frame 210T are pre-packed double sealed LL bearings which are greased for life at the factory and do not need re-lubrication.
- Frames 254T and higher use open bearings, re-greasable while running, with integral grease fittings & drains, and cast iron internal bearing caps.
- Thick V-Ring slinger protects bearing against moisture and contaminants.
- Class B or lower temperature rise ensures cool running and increased insulation life.
- Non-hygroscopic, vacuum pressure impregnated, Class F rated insulation system ensures ample temperature reserve under all operating conditions.
- Polypropylene non-static, non-sparking external cooling fan, bi-directional.
- All fasteners are plated Hex Head bolts or Philips multi-head bolts.
- Plated eye-bolts accessible through the crate for lifting with the crate intact (except 140 frames).
- All internal surfaces coated with alkyd primer for corrosion protection.
- Rotor surface coated with a rust inhibitor treatment.
- Corrosion resistant primer and paint system on all external surfaces.

Performance Data

HP	Full Load r/min	Frame	Cat. No. Base Mount 460 Volt	Cat. No. Base Mount 575 Volt	Code	Current at 460V		Current at 575V		Torque			Efficiency			Power Factor			Approx. Weight (lbs)
						Full Load (A)	Locked Rotor (A)	Full Load (A)	Locked Rotor (A)	Full Load (LB-FT)	Locked Rotor %	Break Down %	Full Load %	3/4 Load %	1/2 Load %	Full Load %	3/4 Load %	1/2 Load %	
1	3435	143T	WNN400	WNN500	H	1.4	15	1.1	12	1.53	250	320	82.0	82.5	81.8	87.5	82.9	73.3	51
1	1735	143T	WNN401	WNN501	J	1.5	15	1.2	12	3.03	260	330	82.5	82.4	81.0	79.0	71.2	58.1	53
1	1150	145T	WNN402	WNN502	G	1.8	15	1.4	12	4.57	235	265	80.0	79.5	77.5	68.0	59.4	46.5	66
1.5	3450	143T	WNN403	WNN503	H	2.0	20	1.6	16	2.28	260	380	82.5	82.1	80.6	84.0	77.5	65.6	53
1.5	1735	145T	WNN404	WNN504	H	2.2	20	1.8	16	4.54	250	330	84.0	83.9	82.6	79.0	72.0	58.4	60
1.5	1150	182T	WNN405	WNN505	H	2.2	20	1.8	16	6.85	190	290	85.5	85.0	83.3	76.0	68.2	55.2	84
2	3450	145T	WNN406	WNN506	H	2.7	25	2.2	20	3.05	260	390	84.0	83.6	82.1	84.0	78.0	66.3	62
2	1735	145T	WNN407	WNN507	G	2.8	25	2.2	20	6.06	210	300	84.0	84.5	84.0	82.0	75.4	63.0	62
2	1150	184T	WNN408	WNN508	H	3.0	25	2.4	20	9.14	200	290	86.5	86.1	84.5	76.4	69.1	56.2	90
3	3510	182T	WNN409	WNN509	J	3.8	32	3.0	26	4.49	190	330	85.5	86.0	85.4	89.0	85.1	76.2	86
3	1755	182T	WNN410	WNN510	K	4.1	32	3.3	26	8.98	240	330	87.5	87.4	86.3	83.0	77.0	65.0	90
3	1170	213T	WNN411	WNN511	J	4.2	32	3.4	26	13.47	240	300	87.5	87.1	85.4	75.0	67.3	54.1	139
5	3510	184T	WNN412	WNN512	J	6.1	46	4.9	37	7.48	180	290	87.5	88.0	87.9	91.0	88.5	82.0	95
5	1750	184T	WNN413	WNN513	J	6.5	46	5.2	37	15.01	220	270	87.5	88.1	87.7	85.0	80.0	69.0	97
5	1165	215T	WNN414	WNN514	H	7.1	46	5.7	37	22.55	210	220	87.5	87.7	86.9	79.0	73.0	60.0	150
7.5	3520	213T	WNN415	WNN515	G	8.9	64	7.1	51	11.19	175	300	88.5	89.1	89.0	92.5	91.0	85.3	150
7.5	1750	213T	WNN416	WNN516	H	9.4	64	7.5	51	22.51	200	250	89.5	89.9	89.8	87.0	83.2	74.3	157
7.5	1170	254T	WNN417	WNN517	G	10.6	64	8.5	51	33.68	230	240	89.5	89.2	87.9	77.5	72.0	61.0	229
10	3520	215T	WNN418	WNN518	H	11.6	81	9.3	65	14.92	180	300	89.5	90.1	90.1	93.0	91.5	87.0	170
10	1750	215T	WNN419	WNN519	G	12.5	81	10.0	65	30.02	200	230	89.5	90.4	90.5	88.0	85.2	78.0	179
10	1170	256T	WNN420	WNN520	G	13.7	81	11.0	65	44.90	210	220	89.5	89.7	88.6	78.7	74.0	63.0	254
15	3540	254T	WNN421	WNN521	G	17.6	116	14.1	93	22.27	180	280	90.2	89.6	88.9	91.0	89.6	84.0	262
15	1760	254T	WNN422	WNN522	G	18.6	116	14.9	93	44.77	220	250	91.0	90.7	89.8	83.0	81.4	71.4	284
15	1175	284T	WNN423	WNN523	G	19.3	116	15.4	93	67.07	200	240	90.2	90.1	89.5	83.0	78.7	68.3	357
20	3530	256T	WNN424	WNN524	F	23.2	145	18.6	116	29.76	160	240	90.2	89.6	89.5	91.4	91.0	87.0	280
20	1760	256T	WNN425	WNN525	G	24.8	145	19.8	116	59.70	210	230	91.0	91.8	91.5	83.0	81.0	73.0	313
20	1175	286T	WNN426	WNN526	F	25.8	145	20.6	116	89.42	170	210	90.2	90.3	90.2	84.7	82.0	74.0	397
25	3550	284TS	WNN427	WNN527	F	28.9	183	23.1	146	37.00	170	260	91.0	91.0	90.7	91.5	90.0	85.4	395
25	1770	284T	WNN428	WNN528	G	29.6	183	23.7	146	74.20	190	280	92.4	91.7	91.1	87.0	83.4	74.7	412
25	1180	324T	WNN429	WNN529	F	31.9	183	25.5	146	111.30	170	220	91.7	91.7	91.2	83.5	80.6	71.7	498
30	3550	286TS	WNN430	WNN530	F	34.5	218	27.6	174	44.40	170	250	91.0	91.1	90.9	91.5	90.2	86.0	423
30	1770	286T	WNN431	WNN531	F	35.5	218	28.4	174	89.04	180	270	92.4	92.1	91.6	87.6	84.5	76.5	445
30	1180	326T	WNN432	WNN532	F	38.0	218	30.4	174	133.56	170	210	91.7	91.8	91.4	83.7	81.1	72.7	531
40	3560	324TS	WNN433	WNN533	G	46.5	290	37.2	232	59.07	180	280	91.7	91.2	90.3	89.0	86.9	80.0	558
40	1770	324T	WNN434	WNN534	E	47.1	290	37.7	232	118.72	200	250	93.0	92.2	91.1	89.0	86.8	80.6	560
40	1180	364T	WNN435	WNN535	F	47.4	290	37.9	232	178.08	200	210	93.0	93.0	92.6	85.8	83.0	76.0	747
50	3560	326TS	WNN436	WNN536	F	58.5	363	46.8	290	73.78	210	290	92.4	91.5	90.7	88.0	85.0	77.6	591
50	1770	326T	WNN437	WNN537	E	59.2	363	47.4	290	148.40	200	260	93.0	92.1	91.2	87.4	84.4	78.2	637
50	1180	365T	WNN438	WNN538	F	59.2	363	47.4	290	222.60	200	210	93.0	93.1	92.8	86.0	84.0	77.5	831
60	3560	364TS	WNN439	WNN539	F	67.5	435	54.0	348	88.55	180	250	93.0	92.3	91.7	92.8	92.4	90.0	785
60	1775	364T	WNN440	WNN540	F	69.4	435	55.5	348	177.58	190	230	93.6	93.4	92.9	88.0	86.3	80.2	805
60	1185	404T	WNN441	WNN541	F	70.0	435	56.0	348	266.00	170	220	93.6	93.7	93.4	87.0	85.2	78.7	930
75	3560	365TS	WNN442	WNN542	E	84.3	543	67.4	434	110.69	170	230	93.0	92.4	92.0	92.8	92.7	90.0	844
75	1775	365T	WNN443	WNN543	F	86.2	543	69.0	434	221.98	180	210	94.1	93.5	93.2	88.6	87.4	82.4	849
75	1185	405T	WNN444	WNN544	F	87.7	543	70.2	434	332.50	160	210	93.6	93.8	93.6	88.0	86.9	81.7	1076
100	3570	405TS	WNN445	WNN545	F	100.0	725	80.0	580	147.19	140	260	93.6	93.5	93.1	93.0	92.3	89.2	1023
100	1780	405T	WNN446	WNN546	F	114.0	725	91.2	580	295.17	170	240	94.5	94.3	93.9	89.0	87.6	82.0	1102
100	1180	444T	WNN447	WNN547	F	116.0	725	92.8	580	445.20	160	240	94.1	94.0	93.4	86.0	85.1	78.7	1380
125	3575	444TS	WNN448	WNN548	F	137.0	908	109.6	726	183.70	130	280	94.5	93.9	93.2	93.0	92.7	89.7	1349
125	1780	444T	WNN449	WNN549	F	141.0	908	112.8	726	368.93	190	230	94.5	94.4	94.1	90.0	89.0	87.3	1455
125	1180	445T	WNN450	WNN550	F	145.0	908	116.0	726	556.51	160	230	94.1	94.1	93.6	86.0	85.5	79.6	1543
150	3575	445TS	WNN451	WNN551	F	164.0	1085	131.2	868	220.42	150	290	94.5	94.0	93.3	93.6	93.0	90.0	1464
150	1780	445T	WNN452	WNN552	F	169.0	1085	135.2	868	442.74	220	250	95.0	94.6	94.2	90.0	89.0	87.5	1605
150	1180	447T	WNN453	WNN553	F	170.0	1085	136.0	868	667.80	170	240	95.0	94.5	94.0	87.0	85.3	78.8	1916
200	3575	447TS	WNN454	WNN554	F	215.0	1450	172.0	1160	293.90	130	240	95.0	94.4	93.9	94.0	94.0	92.9	1770
200	1780	447T	WNN455	WNN555	F	223.0	1450	178.4	1160	590.25	240	250	95.0	94.7	94.3	90.0	88.7	84.0	1887
200	1180	449T	WNN456	WNN556	F	227.0	1450	181.6	1160	890.00	180	240	95.0	94.6	94.0	87.0	84.0	77.0	2134
250	3575	449T	WNN457	WNN557	F	272.0	1825	218.0	1460	366.30	170	240	93.6	94.3	93.7	92.0	93.0	90.6	2048
250	1785	449T	WNN458	WNN558	F	296.0	1825	237.0	1460	735.80	230	200	93.0	93.6	92.8	85.0	84.7	78.5	2137
250	1190	587UZ	WNN459	WNN559	F	287.0	1751	230.0	1401	1103.00	220	240	94.7	94.5	93.6	86.0	83.6	75.9	3630

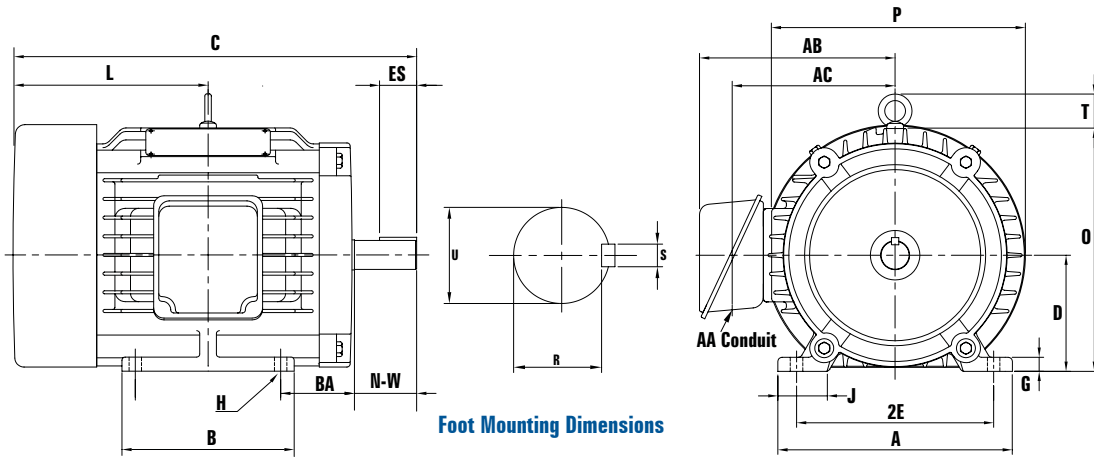
Note: For current at 230V, multiply 460V values by 2. For current at 208V, multiply 460V values by 2.2. For C-Flange, Add Suffix "C" to Cat. No. For D-Flange, Add Suffix "D" to Cat. No.



Features & Benefits

Optimized Design For Quality, Efficiency, and Reliability

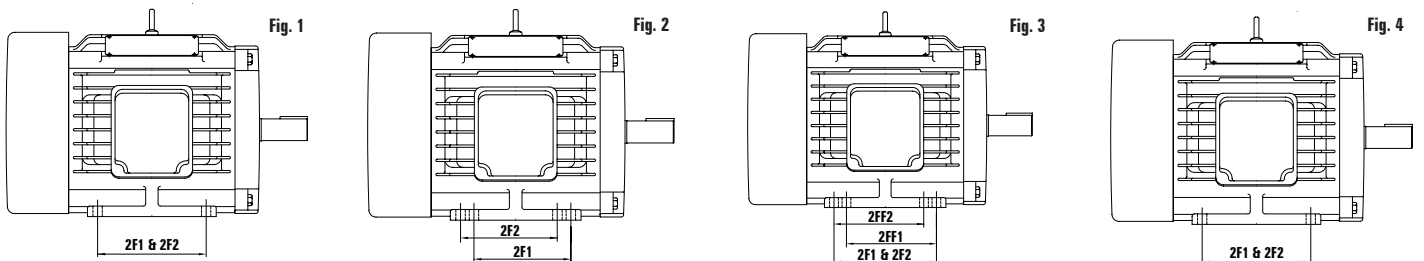
- High efficiency per CSA C390 & EPACT.
- 2 year warranty.
- Quiet running with minimum noise and vibration.
- NEMA Design B or C torques.
- Cool running with low temperature rise.
- Class F insulation with Class B or less temperature rise ensures long life.
- CSA approved and EEV verified.
- Oversize bearings with specially formulated Polyrex EM polyurea bearing grease for smooth running, long life, and wide temperature range.
- Thick V-Ring slinger keeps out moisture and contamination.
- Low loss insulated electro-magnetic steel laminations for controlled core loss and maximum efficiency.
- Heavy enamel coated copper windings with precise winding process ensures consistent motor performance and extended insulation life.
- Superior class F non-hygroscopic, vacuum pressure impregnated insulation system resists heat, contaminants, and coil movement.
- Die cast rotor of high conductivity aluminum eliminates variations in rotor bar and end ring resistance thereby assuring consistent motor performance.
- Dynamically balanced rotor with half key meets or exceeds NEMA standards ensuring smooth running with no vibration.
- Clearly numbered, high visibility lead markers make connections easy.
- Clearly numbered lead gasket ensures lead numbers are always identifiable even if the lead markers are lost or dirty.
- Thick neoprene lead gasket between conduit box and motor protects against moisture, dirt, or dust entering the motor.
- Oversized, diagonally split, full gasket conduit box, fully rotatable at 90 degree increments for ease of installation wiring.
- Non-sparking, corrosion resistant polypropylene external cooling fan assures best motor cooling and quiet operation.
- Rotor surface is coated for outstanding corrosion resistance.
- External surfaces are coated with a corrosion resistant primer and paint system designed to protect the motor against severe environments.
- Plated hardware and non-corrodible 4-rivet stainless steel nameplate for further corrosion protection and readability under severe conditions.
- C & D Flange kits available.



TEFC Dimension Data (inches)

Frame	rpm	Fig.	H dia.	# of Holes	MOUNTING						SHAFT		KEYWAY		OVERALL										BEARINGS					
					BA	D	2E	2F1	2F2	2FF1	2FF2	U	N-W	R	ES min.	S	A	AA	AB	AC	B	C	G	J	L	O	P	T	DE	NDE
143T	all	2	0.34	8	2.25	3.5	5.5	4	4	-	-	0.875	2.25	0.771	1.41	0.188	7	3/4 NPT	6.5	4.72	5.79	12.5	0.512	1.45	6.05	7.7	7.4	No eye bolt	6205LL	6205LL
145T	all	4						5	5	4	4										6.77	13.5			6.65					
182T	3600	2	0.41	12	2.75	4.5	7.5	4.5	4.5	-	-	1.125	2.75	0.986	1.78	0.25	9	3/4 NPT	7.48	4.53	6.65	15.3	0.669	2.04	7.35	9	9.37	1.58	6306LL	6306LL
	1800	4						5.5	5.5	4.5	4.5										7.68				6.65					
184T	all	4	8	12	2.75	4.5	7.5	5.5	5.5	4.5	4.5	1.125	2.75	0.986	1.78	0.25	9	3/4 NPT	7.48	4.53	7.68	6.65	7.85	9	9.37	1.58	6306LL	6306LL		
213T	all	1	0.41	4	3.5	5.25	8.5	5.5	5.5	-	-	1.375	3.38	1.201	2.41	0.312	10.5	1.00 NPT	8.27	7.09	7.01	19	0.787	2.45	9.25	10.5	10.9	1.97	6208LL	6208LL
215T	all	3						7	7	5.5	5.5										8.50	22.5			8.50					
254T	all	1	0.53	4	4.25	6.25	10	8.25	8.25	-	-	1.625	4.00	1.416	2.91	0.375	12.5	1.25 NPT	10.43	8.07	10.08	23.4	0.866	2.87	10.9	12.8	13	2.35	6309	6309
256T	all	3						10	10	8.25	8.25										11.81	25.1			11.81					
284T	all	1	0.53	4	4.75	7	11	9.5	9.5	-	-	1.875	4.62	1.591	3.28	0.5	4	1.50 NPT	13.78	8.46	12.24	28	0.8	2.756	13.75	14.5	14.1	2.35	6310	6310
284TS	all	3						11	11	9.5	9.5										13.78	8.46			12.24					
286T	all	3	0.53	8	4.75	7	11	11	11	9.5	9.5	1.625	3.25	1.416	1.91	0.375	14	1.50 NPT	13.78	8.46	13.74	29.5	0.8	2.756	14.5	14.5	14.1	2.35	6310	6310
286TS	all	3						11	11	9.5	9.5										13.74	29.5			28					
324T	all	1	0.66	4	5.25	8	12.5	10.5	10.5	-	-	2.125	5.25	1.845	3.91	0.5	5	2.00 NPT	14.76	10.63	12.01	30.3	1.11	2.756	14.55	16	15.63	2.5	6312	6312
324TS	all	3						10.5	10.5	-	-										1.875	3.75			1.591					
326T	all	3	0.66	8	5.25	8	12.5	12	12	10.5	10.5	2.125	5.25	1.845	3.91	0.5	16	2.00 NPT	14.76	10.63	13.50	31.8	1.11	2.756	15.3	16	15.63	2.5	6312	6312
326TS	all	3						10.5	10.5	10.5	10.5										13.50	31.8			13.50					
364T	all	1	0.66	4	5.88	9	14	11.25	11.25	-	-	2.375	5.88	2.021	4.28	0.625	8	3.00 NPT	16.14	12.6	14.96	33.15	1.25	2.953	15.765	18.25	17.56	2.5	6314	6314
364TS	all	3						11.25	11.25	-	-										1.875	3.75			1.591					
365T	all	3	0.66	8	5.88	9	14	12.25	12.25	11.25	11.25	1.875	3.75	1.591	2.03	0.5	18	3.00 NPT	16.14	12.6	14.96	34.15	1.25	2.953	16.265	18.25	17.56	2.5	6314	6314
365TS	all	3						11.25	11.25	11.25	11.25										14.96	34.15			32.02					
404T	all	1	0.81	4	6.62	10	16	12.25	12.25	-	-	2.875	7.25	2.45	5.65	0.75	20	3.00 NPT	18.11	12.2	16.22	37	1.34	3.15	17.005	20	19	2.5	6316	6316
404TS	all	3						12.25	12.25	-	-										2.125	4.25			1.845					
405T	all	3	0.81	8	6.62	10	16	13.75	13.75	12.25	12.25	2.875	7.25	2.45	5.65	0.75	20	3.00 NPT	18.11	12.2	16.22	38.5	1.34	3.15	17.755	20	19	2.5	6316	6316
405TS	all	3						12.25	12.25	12.25	12.25										2.125	4.25			1.845					
444T	all	1	0.81	4	7.5	11	18	14.5	14.5	-	-	3.375	8.5	2.88	6.91	0.875	22	3.00 NPT	19.49	14.76	19.21	42.75	1.38	3.35	19.5	21.75	21.6	2.91	NU318	6316
444TS	all	3						14.5	14.5	-	-										2.375	4.75			2.021					
445T	all	3	0.81	8	7.5	11	18	16.5	16.5	14.5	14.5	3.375	8.5	2.88	6.91	0.875	22	3.00 NPT	19.49	14.76	19.21	44.75	1.38	3.35	20.5	21.75	21.6	2.91	NU318	6316
445TS	all	3						14.5	14.5	14.5	14.5										2.375	4.75			2.021					
447T	all	3	0.81	8	7.5	11	18	20	20	16.5	16.5	3.375	8.5	2.88	6.91	0.875	22	3.00 NPT	19.49	14.76	22.99	48.25	1.38	3.35	22.25	21.75	21.6	2.91	NU320	6316
447TS	all	3						20	20	16.5	16.5										2.375	4.75			2.021					
447TZ	3	0.81	0.81	8	7.5	11	18	20	20	16.5	16.5	3.375	10.125	2.88	8.54	0.875	22	3.00 NPT	19.49	14.76	22.99	50	1.38	3.35	22.25	21.75	21.6	2.91	NU320	6316
449T	all	3						20	20	16.5	16.5										2.375	4.75			2.021					
449TS	all	3	0.81	8	7.5	11	18	25	25	20	20	3.375	8.5	2.88	6.91	0.875	22	3.00 NPT	19.49	14.76	27.95	49.5	1	3.15	24.75	21.75	21.6	4.25	6316	6316
449TZ	3	0.81	0.81	8	7.5	11	18	25	25	20	20	3.375	10.125	2.88	8.54	0.875	22	3.00 NPT	19.49	14.76	27.95	55	1	3.15	24.75	21.75	21.6	4.25	NU320	6318

2F1 & 2FF1 dimensions (2FF1 only where present) are applicable in F1 mounting position. 2F2 & 2FF2 dimensions (2FF2 only where present) are applicable in F2 mounting position.



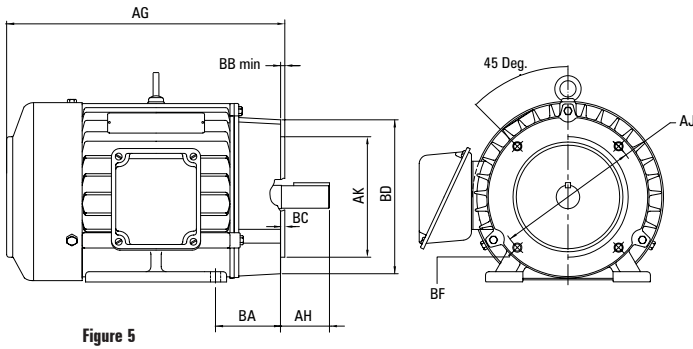


Figure 5

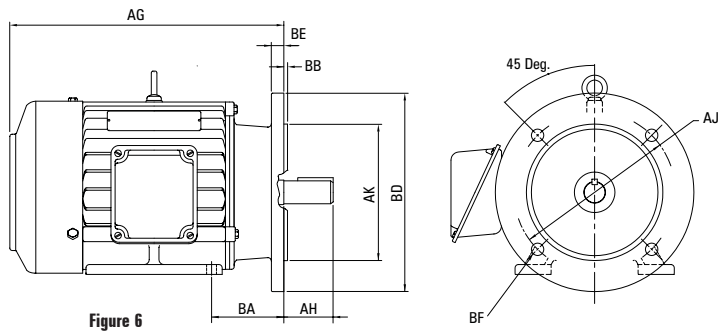


Figure 6

Dimensions (foot mount with drive end flange “kits” installed)

TEFC C-Face Dimension Data (inches)

C Flange Kits (see Fig.5)												
Frame	AG	AH	AJ	AK	NEMA BA*	Kit BA	BB min.	BC	BD max.	BF HOLE		
										qty.	Tap Size	Bolt Penetration Allowance
143TC	10.54											
145TC	11.54	2.12	5.875	4.5	2.75*	2.25	0.16	0.12	6.5	4	3/8-16	0.56
182TC	12.93											
184TC	13.63	2.62	7.25	8.5	3.50*	2.75	0.25	0.12	9	4	1/2-13	0.75
213TC	16.13											
215TC	19.63	3.12	7.25	8.5	4.25*	3.5	0.25	0.25	9	4	1/2-13	0.75
254TC	19.90											
256TC	21.60	3.75	7.25	8.5	4.75*	4.25	0.25	0.25	10	4	1/2-13	0.75
284TC	23.87	4.38										
284TSC	23.75	3										
286TC	25.37	4.38	9	10.5	4.75	4.75	0.25	0.25	11.25	4	1/2-13	0.75
286TSC	25.25	3										
324TC	25.55	5										
324TSC	25.55	3.5	11	12.5	5.25	5.25	0.25	0.25	14	4	5/8-11	0.94
326TC	27.05	5										
326TSC	27.05	3.5										
364TC	27.78	5.62										
364TSC	27.77	3.5	11	12.5	5.88	5.88	0.25	0.25	14	8	5/8-11	0.94
365TC	28.78	5.62										
365TSC	28.77	3.5										
404TC	30.25	7										
404TSC	30.25	4	11	12.5	6.62	6.62	0.25	0.25	15.5	8	5/8-11	0.94
405TC	31.75	7										
405TSC	31.75	4										
444TC	34.75	8.25										
444TSC	34.75	4.5	14	16	7.5	7.5	0.25	0.25	18	8	5/8-11	0.94
445TC	36.75	8.25										
445TSC	36.75	4.5										
447TC	40.25	8.25										
447TSC	40.25	4.5	14	16	7.5	7.5	0.25	0.25	18	8	5/8-11	0.94
449TC	45.25	8.25										
449TSC	45.25	4.5										

* = NEMA BA dimension (C flange kits installed on foot mount motors in 143T through 256T frame sizes result in a non-standard NEMA BA dimension, as the resulting BA dimension is still the same as the foot mount BA dimension. This is common in the industry)

143TC through 256TC frame motors with NEMA BA dimensions are available by factory order.

284TC frames & up have NEMA BA dimensions for both factory built and with C flange kits installed.

TEFC D-Face Dimension Data (inches)

D Flange Kits (see Fig.6)												
Frame	AG	AH	AJ	AK	NEMA BA*	Kit BA	BB	BD max.	BE nom.	BF HOLE		
										qty.	Tap Size	Recommended Bolt Length
143TD	10.50											
145TD	11.50	2.25	10	9	2.75*	2.25	0.25	11	0.5	4	0.53	1.25
182TD	12.80											
184TD	13.50	2.75	10	9	3.50*	2.75	0.25	11	0.5	4	0.53	1.25
213TD	15.87											
215TD	19.37	3.38	10	9	4.25*	3.5	0.25	11	0.5	4	0.53	1.25
254TD	19.65											
256TD	21.35	4	12.5	11	4.75*	4.25	0.25	14	0.75	4	0.81	2
284TD	23.63	4.62										
284TSD	23.50	3.25	12.5	11	4.75	4.75	0.25	14	0.75	4	0.81	2
286TD	25.13	4.62										
286TSD	25.00	3.25										
324TD	25.30	5.25										
324TSD	27.52	3.75	16	14	5.25	5.25	0.25	18	0.75	4	0.81	2
326TD	26.80	5.25										
326TSD	28.52	3.75										
364TD	27.52	5.88										
364TSD	27.52	3.75	16	14	5.88	5.88	0.25	18	0.75	4	0.81	2
365TD	28.52	5.88										
365TSD	28.52	3.75										
404TD	30	7.25										
404TSD	30	4.25	20	18	6.62	6.62	0.25	21.9	1	8	0.81	2.25
405TD	31.5	7.25										
405TSD	31.5	4.25										
444TD	34.5	8.5										
444TSD	34.5	4.75	20	18	7.5	7.5	0.25	21.9	1	8	0.81	2.25
445TD	36.5	8.5										
445TSD	36.5	4.75										
447TD	39.75	8.5										
447TSD	39.75	4.75	20	18	7.5	7.5	0.25	21.9	1	8	0.81	2.25
449TD	44.75	8.5										
449TSD	44.75	4.75										

* = NEMA BA dimension (D flange kits installed on foot mount motors in 143T through 256T frame sizes result in a non-standard NEMA BA dimension, as the resulting BA dimension is still the same as the foot mount BA dimension. This is common in the industry)

143TD through 256TD frame motors with NEMA BA dimensions are available by factory order.

284TD frames & up have NEMA BA dimensions for both factory built and with D flange kits installed.