

3 Phases Rolled Steel Frame Motors



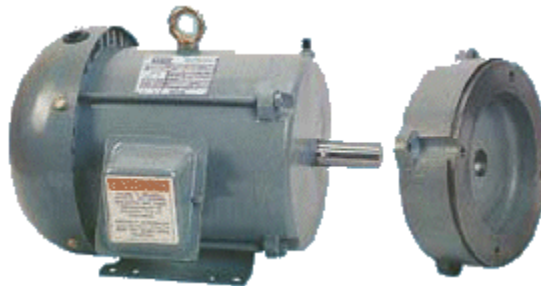
56 Frame TEFC

- TEFC, ODP style available
- Rolled steel NEMA frame 56(C), 143T, 145T, 182T, 184T, 213T, 215T.
- Service Factor 1.15
- Continuous Duty
- B class insulation

- C face available
- 208~230/460V, 230/460V, 575V @ 60Hz or at request
- High efficiency as epact



143T~215T Frame ODP



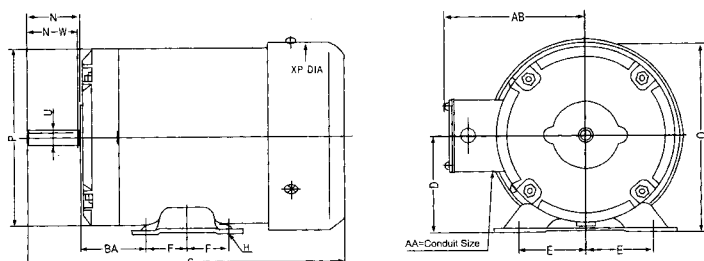
143T~215T Frame TEFC

TECHNICAL DATA (TEFC, 56 Frame)

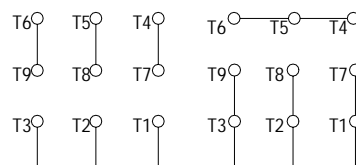
Type	HP (HP)	Voltage (V)	Freq (Hz)	Current (A)	Speed (r/min)	Eff (%)	Power factor	Start Torque Rated Torque	Starting Current Rated Current	Max Torque Rated Torque
ASN5604	1/3	230/460	60	0.5	1700	79	0.81	2.8	7	3.2
ASN5614	1/2	230/460	60	0.9	1700	71	0.75	2.6	7	2.8
ASN5624	3/4	230/460	60	1.3	1700	72	0.76	2.7	7	3.2
ASN5634	1	230/460	60	1.7	1700	79	0.73	2.9	7	3.2
ASN5644	11/2	230/460	60	2.2	1700	83	0.76	2.8	7	3.2
ASN5664	2	230/460	60	2.9	1700	82	0.80	28	7	3.3
ASN56S2	1/3	230/460	60	0.65	3400	59	0.83	4	7	4.2
ASN5602	1/2	230/460	60	0.88	3400	62	0.85	4	7	4
ASN5612	3/4	230/460	60	1.2	3400	69	0.84	3.8	7	3.9
ASN5622	1	230/460	60	1.6	3400	69	0.85	3.8	8	3.7
ASN5632	11/2	230/460	60	2.3	3400	72	0.85	3.9	7	3.5
ASN5642	2	230/460	60	2.7	3400	80	0.88	3.6	9	3.6

Note: the current data in sheet are for 460V.

OVERALL AND MOUNTING DIMENSIONS



56 and 145T frame (TEFC) rigid base



HIGH VOLTAGE

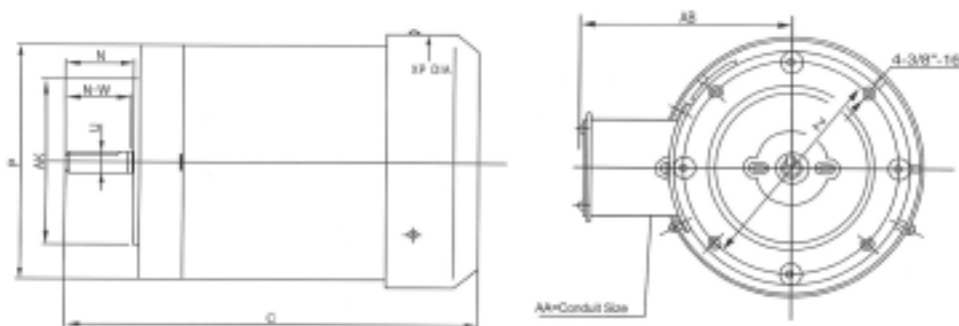
HP	Pole	C
1/3	2P	10.95
1/2		
3/4		
1		
11/2		
2	11.42	

LOW VOLTAGE

HP	Pole	C
1/3	4P	10.95
1/2		
3/4		
1		
11/2		
2	12.40	

NEMA FRAME DIMENSIONS (Inches)

NEMA Frame Size	D	E	F	H	N	O	P	U	N-W	AA	AB	BA	XP
56	3 ¹ / ₂	2 ⁷ / ₁₆	1 ¹ / ₂	1 ¹¹ / ₃₂ slot	1 ¹⁵ / ₁₆	6 ¹³ / ₁₆	6 ¹⁹ / ₃₂	5 ⁵ / ₈	1 ⁷ / ₈	1 ¹ / ₂	5 ⁵ / ₁₆	2 ³ / ₄	7 ⁵ / ₃₂
145T	3 ¹ / ₂	2 ³ / ₄	2 ¹ / ₂	1 ¹¹ / ₃₂	2 ³ / ₈	6 ¹³ / ₁₆	6 ¹⁹ / ₃₂	7 ⁷ / ₈	2 ¹ / ₄	3 ³ / ₄	5 ⁵ / ₁₆	2 ¹ / ₄	7 ⁵ / ₃₂



56 and 145T frame (TEFC) with C Flange

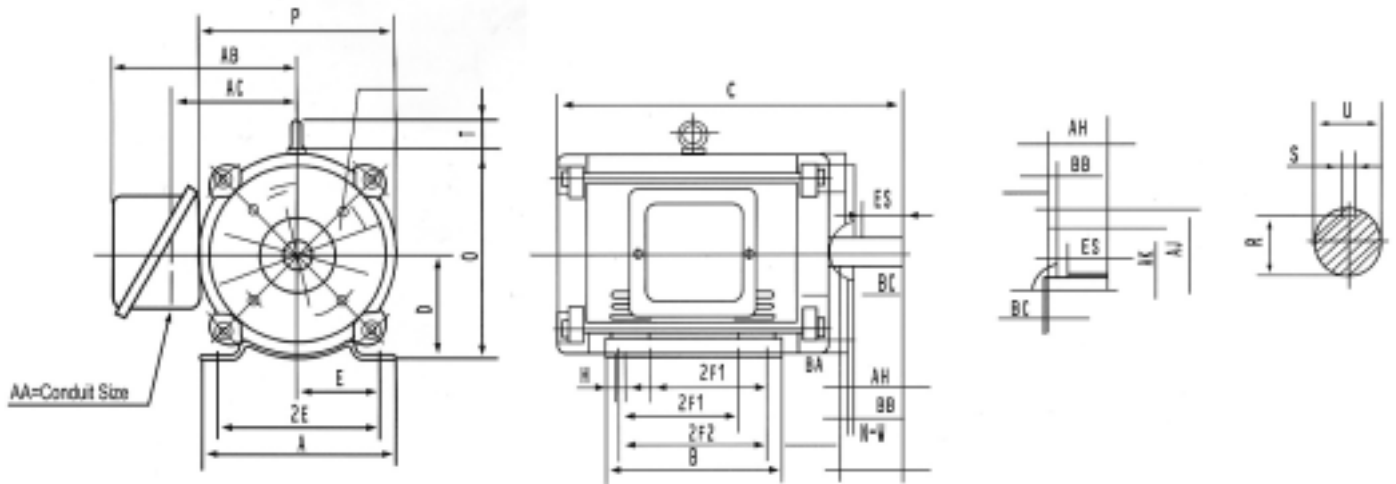
NEMA Frame Size	N	P	U	N-W	AA	AB	XP	AJ	AK
56	1 ¹⁵ / ₁₆	6 ¹⁹ / ₃₂	5 ⁵ / ₈	1 ⁷ / ₈	1 ¹ / ₂	5 ⁵ / ₁₆	7 ⁵ / ₃₂	5 ⁷ / ₈	4 ¹ / ₂
145T	2 ³ / ₈	6 ¹⁹ / ₃₂	7 ⁷ / ₈	2 ¹ / ₄	3 ³ / ₄	5 ⁵ / ₁₆	7 ⁵ / ₃₂	5 ⁷ / ₈	4 ¹ / ₂

PERFORMANCE DATA (Large Frame, ODP)

HP	Frame	RPM	Model	Volts	Torque			Current		Full Load Efficiency	Power Factor%	NEMA Code Letter	Approx Net Weight	
					Full Load	Locked Rotor	Locked Down	Amps						
		Lb-Ft			%	%	Full Load	Locked Rotor						
							%	Lbs						
1	143T	3500	AD143TC1M2A	230/460	1.5	180	260	3.4/1.7		30/15	75.5	73.0	N	35.0
	143T	1755	AD143TC1M4A		3.0	275	300	3.2/1.6			82.5	67.5	N	44.0
	145T	1150	AD143TC1M6A		4.6	170	265	3.8/1.9			80.0	61.0	N	43.0
1.5	143T	3500	AD143TC1.5M2A	230/460	2.3	175	250	4.2/2.1		40/20	82.5	81.0	M	41.0
	145T	1745	AD182TC1.5M4A		4.5	250	280	4.6/2.3			84.0	70.0	MK	47.0
	182T	1180	AD182TC1.5M6A		6.8	165	250	5.2/2.6			84.0	64.0	M	72.0
2	145T	3490	AD145TC2M2A	230/460	3.0	170	240	5.4/2.7		50/25	84.0	81.0	L	41.0
	145T	1740	AD145TC2M4A		6.0	235	270	6.2/3.1			84.0	70.0	L	51.0
	184T	1180	AD184TC2M6A		8.9	160	240	6.8/3.4			85.5	65.0	L	76.0
3	145T	3475	AD145TC3M2A	230/460	4.5	160	230	8.0/4.0		64/32	84.0	84.5	K	44.0
	182T	1760	AD182TC3M4A		9.0	215	250	8.0/4.0			86.5	80.0	K	84.0
	213T	1175	AD213TC3M6A		13.4	155	230	9.8/4.9			86.5	68.0	K	110.0
5	182T	3510	AD182TC5M2A	230/460	7.5	150	215	12.8/6.4		92/46	85.5	85.0	J	79.0
	184T	1745	AD184TC5M4A		15.1	185	225	13.0/6.5			87.5	82.0	J	91.0
	215T	1170	AD215TC5M6A		22.5	150	215	16.4/8.2			87.5	67.0	J	119.0
7.5	184T	3490	AD184TC7.5M2A	230/460	11.3	140	200	18.4/9.2		127/63.5	87.5	87.0	H	86.0
	213T	1760	AD213TC7.5M4A		22.4	175	215	19.0/9.5			88.5	82.0	H	128.0
10	213T	3545	AD213TC10M2A	230/460	14.8	135	200	25.2/12.6		162/81	88.5	84.0	H	122.0
	215T	1750	AD215TC10M4A		30.0	165	200	25.0/12.5			89.5	81.0	H	139.0
15	215T	3535	AD215TC15M2A	230/460	22.3	130	200	36.2/18.1		232/116	89.5	86.5	G	134.0

NEMA FRAME	Amax	B	C	D	H	BA	E	2F1	2F2	AB	AC	AA	T	O
143T	7.0	6.0	12.6	3.50	0.34	2.75	2.75	4.0	5.0	6.5	4.9	1.10	1.57	7.09
145T														
182T	9.0	6.7	15.6	4.50	0.41	3.50	3.75	4.5	5.5	7.3	5.7	1.10	1.97	9.25
184T														
213T	10.5	8.7	17.7	5.25	0.41	4.25	4.25	5.5	7.0	8.6	6.5	1.38	1.97	10.63
215T														

NEMA FRAME	P	BDmax	U	KEYSEAT			AJ	AK	N	BF	Q	AH	BB	BC
				S	R	ESmin								
143T	6.89	6.5	0.875	0.188	0.771	1.41	5.875	4.5	4.0	3/8-16	0.56	2.12	0.16	+0.12
145T														
182T	8.66	9.0	1.125	0.250	0.986	1.78	7.250	8.5	4.0	1/2-13	0.75	2.62	0.25	+0.12
184T														
213T	10.24	9.0	1.375	0.312	1.201	2.41	7.250	8.5	4.0	1/2-13	3.12	0.25	0.25	+0.25
215T														



PERFORMANCE DATA (Large Frame TEFC)

HP	Frame	RPM	Model	Volts	Torque			Current		Full Load Efficiency %	Power Factor %	NEMA Code Letter	Approx Net Weight Lbs
					Full Load Lb-Ft	Locked Rotor %	Locked Down %	Amps					
								Full Load	Locked Rotor				
1	143T	3500	AF143T1M2A	230/460	1.5	180	260	3.2/1.6		75.5	76.0	N	34.0
	143T	1760	AF143T1M4A		3.0	275	300	3.4/1.7		82.5	65.0	N	48.0
	145T	1155	AF143T1M6A		4.5	170	265	4.0/2.0		80.0	59.0	N	47.0
1.5	143T	3505	AF143T1.5M2A	230/460	2.2	175	250	4.2/2.1		82.5	79.0	M	43.0
	145T	1755	AF145T1.5M4A		4.5	250	280	5.0/2.5		84.0	67.0	M	52.0
	182T	1183	AF182T1.5M6A		6.7	165	250	5.04/2.52		87.2	64.0	M	66.5
2	145T	3490	AF145T2M2A	230/460	3.0	170	240	5.2/2.6		84.0	83.0	L	45.0
	145T	1750	AF145T2M4A		6.0	235	270	6.0/3.0		84.0	72.0	L	55.0
	184T	1180	AF184T2M6A		8.9	160	240	6.6/3.3		86.5	66.0	L	85.0
3	182T	3530	AF182T3M2A	230/460	4.5	160	230	7.6/3.8		85.5	84.0	K	69.0
	182T	1760	AF182T3M4A		9.0	215	250	7.8/3.9		87.5	81.5	K	88.0
	213T	1180	AF213T3M6A		13.3	155	230	9.8/4.9		87.5	67.0	K	118.0
5	184T	3515	AF184T5M2A	230/460	7.5	150	215	12.2/6.1		87.5	86.0	J	88.0
	184T	1740	AF184T5M4A		15.1	185	225	13.0/6.5		87.5	82.0	J	95.0
	215T	1170	AF215T5M6A		22.5	150	215	15.0/7.5		87.5	70.0	J	128.0
7.5	213T	3530	AF213T7.5M2A	230/460	11.2	140	200	18.4/9.2		88.5	86.5	H	121.00
	213T	1755	AF213T7.5M4A		22.5	175	215	18.8/9.4		89.5	83.5	H	137.0
10	215T	3530	AF213T10M2A	230/460	14.9	135	200	23.6/11.8		89.5	90.0	H	134.0
	215T	1750	AF215T10M4A		30.0	165	200	25.0/12.5		89.5	83.5	H	146.0

INSTALLATION DIMENSION

INCHES

NEMA FRAME	Amax	B	C	D	H	BA	E	2F1	2F2	AB	AC	AA	T	O	P	SHAFT DIMENSION		KEYSEAT		
																N-W	U	S	R	ES
143T	7.0	6.0	13.4	3.50	0.34	2.25	2.75	4.0	5.0	6.5	4.9	1.10	1.57	7.09	8.0	2.25	0.875	0.188	0.771	1.41
145T																				
182T	9.0	6.7	15.7	4.45	0.41	2.75	3.75	4.5	5.5	7.3	5.7	1.10	1.97	9.25	10.2	2.75	1.125	0.250	0.986	1.78
184T																				
213T	10.0	8.7	19.3	5.25	0.41	3.50	4.25	5.5	7.0	8.6	6.5	1.38	1.97	10.7	11.7	3.38	1.375	0.312	1.201	2.41
215T																				

EXTRA C-FACE KIT ENDSHIELD

FRAME	AJ	AK	BB	BF	Q2
140T	5.875	4.500 4.497	0.16	3/8-16	0.56
180T	7.250	8.500 8.497	0.25	1/2-13	0.75
210T	7.250	8.500 8.497	0.25	1/2-13	0.75

